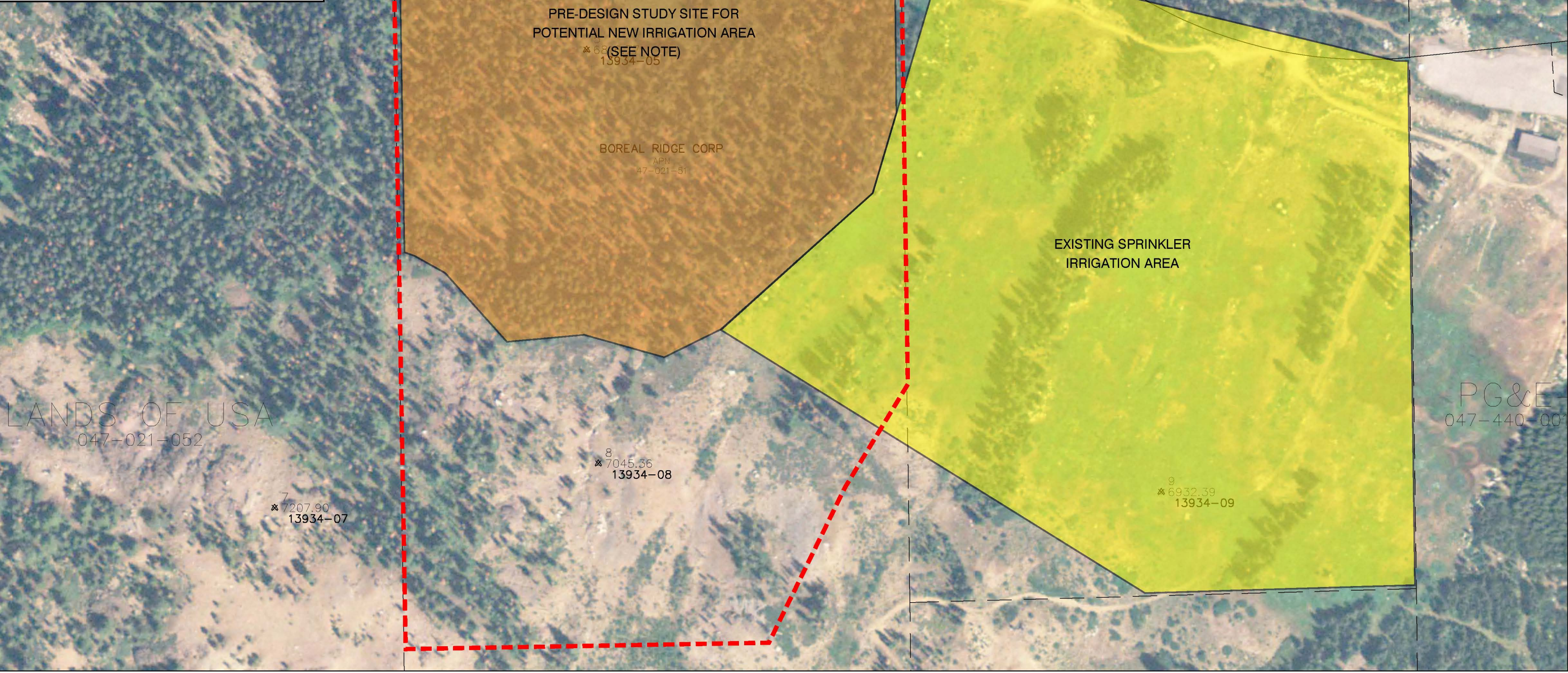


LEGEND

- LIMITS OF RESOURCE SURVEYS
- EXISTING SPRINKLER IRRIGATION AREA
- STUDY AREA FOR POTENTIAL ADDITIONAL IRRIGATION

NOTE:
AREA TO BE DISTURBED WILL BE CONTAINED WITHIN THE AREA SURVEYED. THE ACTUAL IMPACT AREA WILL BE DETERMINED DURING PRE-DESIGN; HOWEVER, IT IS LIKELY LESS THAN 15 ACRES AND ITS EXACT LOCATION WILL BE DETERMINED BASED ON SOIL CHARACTERISTICS, AND BIOLOGICAL RESOURCE IMPACT MINIMIZATION AND AVOIDANCE.



Existing and Potential New Irrigation Areas
Showing Limits of Resource Surveys